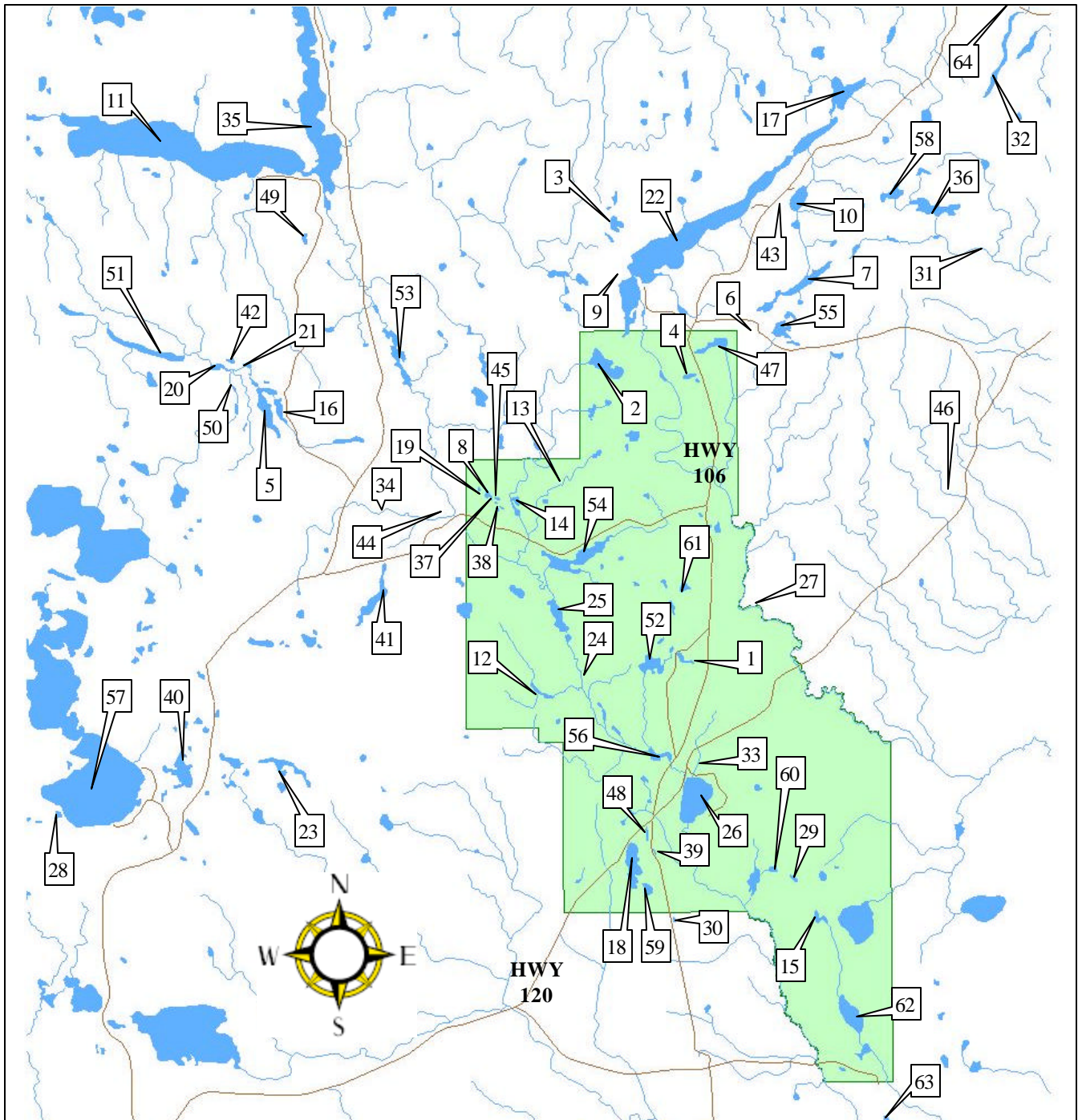




SPORT FISHING WATERS IN NARROW HILLS PROVINCIAL PARK AND SURROUNDING AREA



- | | | | | |
|---------------------|------------------------|---------------------|------------------------|----------------------------|
| 1. Baldy Lake | 15. Grace Lake | 29. Mackie Lake | 43. Road Lake | 57. Whiteswan (Whelan Bay) |
| 2. Bean Lake | 16. Hayes Lake | 30. Mitten Lake | 44. Sand Lake | 58. Wolf Lake |
| 3. Bug Lake | 17. Heart Lake | 31. Mossy River | 45. Sapphire Lake | 59. Zeden Lake |
| 4. Burtlein Lake | 18. Ispuchaw Lake | 32. Narrow Lake | 46. Scarth River | 60. Beaver Lake |
| 5. Clarence Lake | 19. Jade Lake | 33. Nipawin Lake | 47. Sealey Lake | 61. Tisdale Lake |
| 6. Cora Lake | 20. Jasper Lake | 34. Nipekamew Creek | 48. Shannon Lake | 62. Falling Horse (Odell) |
| 7. Cub Lake | 21. Kit Lake | 35. Nipekamew Lake | 49. Singh Lake | 63. Moose Lake |
| 8. Diamond Lake | 22. Little Bear Lake | 36. North Lake | 50. Squaw Lake | 64. Big Sandy Lake |
| 9. Dorothy Lake | 23. Lorenz Lake | 37. Opal Lake | 51. Steepbank Lake | |
| 10. Dupuis Lake | 24. Lost Echo Creek | 38. Pearl Lake | 52. Stickley Lake | |
| 11. East Trout Lake | 25. Lost Echo Lake | 39. Pine Lake | 53. Stuart Lake | |
| 12. Fairy Glan Lake | 26. Lower Fishing Lake | 40. Pinkney Lake | 54. Summit Lake | |
| 13. Fox Creek | 27. McDougal Creek | 41. Piprell Lake | 55. Uchuk Lake | |
| 14. Fox Lake | 28. Maistre Lake | 42. Ridge Lake | 56. Upper Fishing Lake | |

NARROW HILLS PROVINCIAL PARK LAKE INFORMATION

BALDY LAKE	<ul style="list-style-type: none">- 7 km. Northwest of Lower Fishing Lake- walleye, pike, and splake- stocked annually with walleye- 26 ha in size- access by 5 km road off of hwy #106- non serviced camping- no boat dock- primitive launch	Map ref #1
BEAN LAKE	<ul style="list-style-type: none">- 5 km. South of Little Bear Lake- pike, walleye- 150 ha in size- access by 5 km. Trail from LBL- no camping- no boat dock or launch	Map ref #2
BEAVER LAKE	<ul style="list-style-type: none">- 5 km. Southeast of Lower Fishing lake- pike- 13 ha in size- access off of Narrow Hills Esker Road- and go 2 kms south on Beaver Lake- no boat dock- primitive launch	Map ref #60
BIG SANDY LAKE	<ul style="list-style-type: none">- 68 km. Northeast of Lower Fishing Lake- walleye, pike, and whitefish- 7500 ha in size- access by #106 highway- non serviced camping- boat dock- primitive boat launch	Map ref #64
BUG LAKE	<ul style="list-style-type: none">- 5 km. North of Little Bear- pike- 35 ha in size- access by 5 km trail only from LBL- no camping- no boat dock or boat launch	Map ref #3
BURTLEIN LAKE	<ul style="list-style-type: none">- 24 KM north of Lower Fishing Lake- splake, tiger trout- stocked every second year w/splake- every year with tiger trout- (brook/brown cross)- 14 ha in size- access by 150 m walking trail off #106 highway- no camping- no boat dock or boat launch	Map ref #4

CLARENCE LAKE	<ul style="list-style-type: none"> - 13 km. South of East Trout Lake - pike and walleye - 120 ha in size - access by road (Clarence Lake road) - Off of the East Trout access road - Wilderness camping - No boat dock or boat launch 	Map ref #5
CORA LAKE	<ul style="list-style-type: none"> - 6.5 km east of Little Bear Lake - stocked annually w/rainbow trout - 4 ha in size - access by 0.5 km walking trail off of Camp 6 logging road off 106 hwy. - no camping - no boat dock or boat launch 	Map ref #6
CUB LAKE	<ul style="list-style-type: none"> - 6.5 km east of Little Bear Lake - pike - 155 ha in size - access by 0.6 km trail off camp 6 logging road off 106 hwy - no camping - no boat dock or boat launch 	Map ref #7
DIAMOND LAKE	<ul style="list-style-type: none"> - 40 km northwest of Lower Fishing Lake - brook/brown trout and splake - stocked annually w/brook or splake - 3.7 ha in size - access by Gem Lakes road off East Trout Lake access/then walk 1 km - Also access via short portage (50m) From Jade Lake - wilderness camping - no boat launch or boat dock - electric motors only 	Map ref #8
DOROTHY LAKE	<ul style="list-style-type: none"> - 0.5 km west of Little Bear Lake (across Little Bear Lake) - brook and rainbow trout - 8 ha in size - Access across LBL narrows/short Portage (30m) into Dorothy Lake - no camping - no boat dock - Boat launch at Little Bear Lake 	Map ref #9
DUPUEIS LAKE	<ul style="list-style-type: none"> - 10 km northeast of Little Bear Lake - pike and perch - 96 ha in size - access by 0.5 km trail off 106 hwy. - no camping - no boat dock or boat launch 	Map ref #10

EAST TROUT LAKE	<ul style="list-style-type: none"> - 75 km northwest of Lower Fishing lake - walleye, pike, lake trout and whitefish - 2444 ha in size - access by road (ETL access road off hwy 106 & 913 hwy - non-serviced camping - outfitters - boat dock - boat launch - annual fish derby 	Map ref #11
FALLING HORSE LAKE (ODELL LAKE)	<ul style="list-style-type: none"> - 12 km southeast of Lower Fishing Lake - pike - 148 ha in size - access by Narrow Hills Esker/Harding roads off of 106 hwy. - no camping - no boat dock or boat launch 	Map ref #62
FAIRY GLEN LAKE	<ul style="list-style-type: none"> - 20 km northwest of Lower Fishing Lake - walleye and pike (walleye stocking discontinued in 1995) - 32 ha in size - access by Piprell Lake cut-across road off of 106 hwy - no camping - no boat dock or boat launch 	Map ref #12
FOX CREEK	<ul style="list-style-type: none"> - 1.5 km north of Gem Lake - brook trout – stocking discontinued - access north on Gem Lakes Road - no camping 	Map ref #13
FOX LAKE	<ul style="list-style-type: none"> - 1.0 km east of Gem Lakes - pike - 30 ha in size - access by 2.0 km walking trail through Gem Lakes - no boat dock or boat launch 	Map ref #14
GRACE LAKE	<ul style="list-style-type: none"> - 8 km southeast of Lower Fishing lake - pike - access by 100m steep walking trail off of Narrow Hills Esker Road - no camping – day use only - no boat dock or boat launch 	Map ref #15

HAYES LAKE	<ul style="list-style-type: none"> - 13 km south of East Trout Lake - pike and perch - 45 ha in size - access by Clarence Lake Road off East Trout Lake access road (75m) - no camping - no boat dock or boat launch 	Map ref #16
HEART LAKE	<ul style="list-style-type: none"> - Located off the north end of LBL - pike and whitefish - 153 ha in size - access by 0.5 km walking trail off north end of LBL and 2.5 km walking trail off of 106 hwy - no camping - no boat dock/no boat launch 	Map ref #17
ISPUCHAW LAKE	<ul style="list-style-type: none"> - 12 km south of Lower Fishing Lake - walleye and pike - stocked every second year with walleye - 142 ha in size - access by 1 km road off 106 hwy - non-serviced camping - no boat dock - primitive boat launch 	Map ref #18
JADE LAKE	<ul style="list-style-type: none"> - 40 km northwest of Lower Fishing lake - rainbow, lake and tiger trout/splake - stocked annually w/rainbow, tiger, or splake - 12 ha in size - access by road (Gem Lakes road off ETL access road + 0.2 walking trail) - wilderness camping - no boat dock or boat launch - electric motors only 	Map ref #19
JASPER LAKE	<ul style="list-style-type: none"> - 18 km south of East Trout Lake - pike - 24 ha in size - access by Clarence Lake Road off ETL access - no camping - no boat dock or boat launch 	Map ref #20
KIT LAKE	<ul style="list-style-type: none"> - 17 km south of East Trout Lake - stocked annually w/rainbow trout - 16 ha in size - access by Clarence Lake Road off ETL access - no camping - no boat dock or boat launch 	Map ref #21

LITTLE BEAR LAKE	<ul style="list-style-type: none"> - 30 km north of Lower Fishing lake - lake trout, pike, whitefish, and walleye - 1506 ha in size - access by road off of 106 hwy (4km) - serviced and non-serviced camping - boat dock - boat launch - outfitters - airstrip 	Map ref #22
LORENZ LAKE	<ul style="list-style-type: none"> - 40 km east of Lower Fishing Lake - pike - 93 ha in size - access off ETL/Whelan Bay Road/hwy 913 (5 km) - no camping - no boat dock or boat launch 	Map ref #23
LOST ECHO CREEK	<ul style="list-style-type: none"> - 15 km northwest of Lower Fishing Lake - brook trout - access by 0.5/1.0 km walking/vehicle - Trails off Piprell lake cut-across off 106 hwy - No camping 	Map ref #24
LOST ECHO	<ul style="list-style-type: none"> - 25 kms northwest of Lower Fishing Lake - walleye, pike, and whitefish - 85 ha in size - stocked with walleye every second year - access off old Piprell Lake cut-across and 7 km winding trail - wilderness camping - primitive boat launch - no boat dock 	Map ref #25
LOWER FISHING LAKE	<ul style="list-style-type: none"> - 72 km north of Smeaton on hwy 106 - walleye and pike - 347 ha in size - access by road (3 km off 106 hwy on 120 hwy and 5 km east on LFL access - serviced and non-serviced camping - day use areas - beaches - boat docks - boat launches - outfitters - Conservation Officer Headquarters 	Map ref #26
MCDUGAL CREEK	<ul style="list-style-type: none"> - 12 km north of Lower Fishing Lake - brook trout - access by 2.5 km road off 106 hwy and 8 km north on 120 extension road - wilderness camping 	Map ref #27

MAISTRE LAKE	<ul style="list-style-type: none"> - 50 km north of Candle Lake - brook trout - stocked every second year - 11.3 ha in size - access across Whelan Bay (Whiteswan Lake) - short 50m portage from Whelan Bay - no camping - Boat dock and boat launch at Whelan Bay 	Map ref #28
MACKIE LAKE	<ul style="list-style-type: none"> - 7 km southeast of Lower Fishing Lake - rainbow trout and splake - stocked annually w/rainbow trout and every second year with splake - 1.2 ha in size - access by 100m steep walking trail off Narrow Hills Esker Road - no camping 	Map ref #29
MITTEN LAKE	<ul style="list-style-type: none"> - 10 km southwest of Lower Fishing Lake - splake and perch - splake stocking discontinued - 6 ha in size - access 0.5 walking trail off 106 hwy - no camping - no boat dock or boat launch 	Map ref #30
MOSSY RIVER	<ul style="list-style-type: none"> - 40 km north of Lower Fishing Lake - brook trout stocked every second year - access by road/walking trail off #120 - no camping 	Map ref #31
MOOSE LAKE	<ul style="list-style-type: none"> - 45 km southeast of Lower Fishing Lake - pike - 25 ha in size - access by 13 km off 106 hwy/10 km off Harding and 106 hwy - no camping - no boat dock or boat launch 	Map ref #63
NARROW LAKE	<ul style="list-style-type: none"> - 60 km northeast of Lower Fishing Lake - walleye and pike - 117 ha in size - stocked annually with walleye - access by Narrow Lake Road off 106 hwy and 120 hwy - no camping - no boat dock - primitive boat launch 	Map ref #32

NIPAWIN LAKE	<ul style="list-style-type: none"> - 2 km west of Lower Fishing Lake District Office - brook trout stocked annually - 4 ha in size - access by 200m vehicle/walking trail off Lower Fishing Lake access - no camping - no boat dock or boat launch - 	Map ref #33
NIPEKAMEW CREEK	<ul style="list-style-type: none"> - 40 km northwest of Lower Fishing Lake - brook trout stocked annually - access by road/walking trails off Sand/Gem lakes - road off of the ETL Whelan Bay Road - no camping 	Map ref #34
NIPEKAMEW LAKE	<ul style="list-style-type: none"> - 75 km northwest of Lower Fishing Lake - walleye and pike - 1350 ha in size - access by ETL access road - camping non-serviced - boat dock - boat launch - outfitter 	Map ref #35
NORTH LAKE	<ul style="list-style-type: none"> - 50 km north of Lower Fishing Lake - walleye and pike - 124 ha in size - poor access by 8.5 km road off # 120 - no camping - no boat dock or boat launch 	Map ref #36
OPAL LAKE	<ul style="list-style-type: none"> - 40 km northwest of Lower Fishing Lake - stocked annually with brook or brown trout - 2.5 ha in size - access by 1.0 km walking trail from Jade Lake/also access via short portage (100m) from Jade Lake - wilderness camping - no boat dock or boat launch - electric motors only 	Map ref #37
PEARL LAKE	<ul style="list-style-type: none"> - 40 km northwest of Lower Fishing Lake - 3.2 ha in size - winterkilled in 1991 -92 - stocking of lake w/splake is discontinued 	Map ref #38

PINE LAKE	<ul style="list-style-type: none"> - 7 km southwest of Lower Fishing Lake - splake stocked every second year - 4 ha in size - access by 200m vehicle/walking trail off hwy 106 - no camping - no boat dock or boat launch 	Map ref #39
PINKNEY LAKE	<ul style="list-style-type: none"> - 50 km north of Candle Lake - pike and walleye - 198 ha in size - access by 300m road off hwy #913 - primitive launch - no boat dock 	Map ref #40
PIPRELL LAKE	<ul style="list-style-type: none"> - 40 km northwest of Lower Fishing Lake - rainbow/brown trout and splake - tiger trout stocked in 1999 - stocked annually - 130 ha in size - access by 0.5 km road off ETL/Whelan Bay road - camping - boat dock and boat launch - outfitter 	Map ref #41
RIDGE LAKE	<ul style="list-style-type: none"> - 17 km south of ETL - brook trout stocked every second year - 10 ha in size - access by 0.3 km walking trail off Clarence Lake Road off ETL access - no camping - no boat dock - no boat launch 	Map ref #42
ROAD LAKE	<ul style="list-style-type: none"> - 40 km north of Lower Fishing Lake - rainbow trout stocked annually - 6 ha in size - access by 0.4 km walking trail off 106 hwy - no camping - no boat dock - no boat launch 	Map ref #43
SAND LAKE	<ul style="list-style-type: none"> - 40 km northwest of Lower Fishing lake - brook trout stocked annually - 4 ha in size - access by Sand/Gem Lakes Road off ETL - no camping - no boat dock/no boat launch 	Map ref #44

SAPPHIRE LAKE	<ul style="list-style-type: none"> - 40 km northwest of Lower Fishing lake - splake stocked every second year - 3 ha in size - access by 2.0 km hiking trail through Gem Lakes off Gem Lakes access/also access via short portage (100m) from Opal Lake 	Map ref #45
SCARTH RIVER	<ul style="list-style-type: none"> - 20 km north of Lower Fishing Lake - brook trout - access by road/walking trail off 106 hwy - no camping - stocking discontinued in 1986 - some natural reproduction in present low water levels 	Map ref #46
SEALEY LAKE	<ul style="list-style-type: none"> - 25 km north of Lower Fishing Lake - rainbow/brook trout stocked annually - 72 ha in size - access by 106 hwy - no camping/day-use only - boat dock/boat launch 	Map ref #47
SHANNON LAKE	<ul style="list-style-type: none"> - 7 km southwest of Lower Fishing lake District Office - brown/brook trout stocked alternately - 10 ha in size - access by road off of 106 hwy - no camping/day-use only - no boat dock - boat launch 	Map ref #48
SINGH LAKE	<ul style="list-style-type: none"> - 6.5 km south of East Trout Lake - rainbow trout and kokanee salmon - stocked annually with rainbow trout - access by 150m steep walking trail off East Trout Lake access - no camping - no boat dock/no boat launch 	Map ref #49
SQUAW LAKE	<ul style="list-style-type: none"> - 13 km south of East Trout Lake - Pike - 18 ha in size - access by Clarence lake Road off ETL - no camping - no boat dock/no boat launch 	Map ref #50

STEEP BANK LAKE	<ul style="list-style-type: none"> - 16 km south of East Trout lake - pike, lake trout, and walleye - walleye stocked every second year - 143 ha in size - access by walking trail off Clarence Lake Road/ETL access - wilderness camping - no boat dock - poor access to lake (200m) 	Map ref #51
STICKLEY LAKE	<ul style="list-style-type: none"> - 6 km northwest of Lower Fishing Lake - pike - 85 ha in size - access by road off old 106 hwy north of Caribou Creek - no camping - no boat dock/no boat launch 	Map ref #52
STUART LAKE	<ul style="list-style-type: none"> - 60 km northwest of Lower Fishing Lake - pike - 102 ha in size - access by trail off Wappewekka Road - no camping - no boat dock/primitive boat launch 	Map ref #53
SUMMIT LAKE	<ul style="list-style-type: none"> - 30 km northwest of Lower Fishing Lake - walleye, pike and whitefish - stocked every year with walleye - 219 ha in size - access by road off of ETL/Whelan Bay - no camping - no boat dock - boat launch 	Map ref #54
TISDALE LAKE	<ul style="list-style-type: none"> - 10 km northwest of Lower Fishing Lake - pike - 18 ha in size - access off of old hwy between Stickleby and Baldy Lake (small trail) - Westside 4 km to lake - No boat dock - Primitive launch 	Map ref #61
UCHUK LAKE	<ul style="list-style-type: none"> - 30 km north of Lower Fishing Lake - perch - 55 ha in size - access by Camp 6 road - no camping - no boat dock/no boat launch 	Map ref #55

UPPER FISHING LAKE	<ul style="list-style-type: none"> - 3 km northwest of LFL District Office - walleye and pike - 60 ha in size - access by 106 hwy - camping (outfitter) - boat launch (primitive) 	Map ref #56
WHITESWAN LAKE	<ul style="list-style-type: none"> - 50 km north of Candle Lake - lake trout and pike - 1905 ha in size (Whelan Bay) - access by 5 km road off hwy #913 - serviced camping - boat dock/boat launch 	Map ref #57
WOLF LAKE	<ul style="list-style-type: none"> - 35 km north of Lower Fishing Lake - walleye and pike - 54 ha in size - access by 4.5 km walking trail off 106 hwy or by way of North Lake + 0.5 km trail - no camping - no boat dock/no boat launch 	Map ref #58
ZEDEN LAKE	<ul style="list-style-type: none"> - 8.5 km southeast of Lower Fishing Lake - rainbow/tiger trout and splake - stocked every second year with splake/tiger trout - 29 ha in size - access by 1 km road off 106 hwy - non serviced camping - boat dock - boat launch 	Map ref #59

